

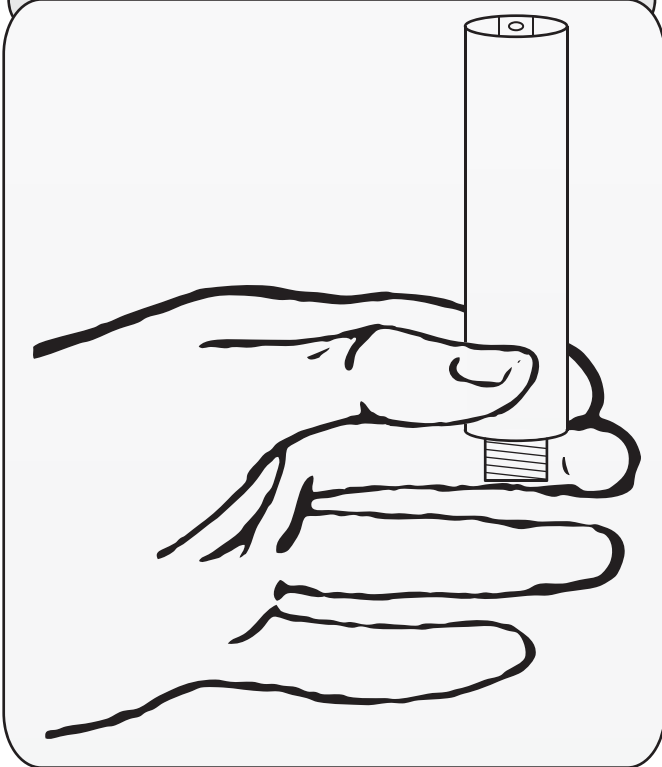


OMICRON V2.5 USER GUIDE

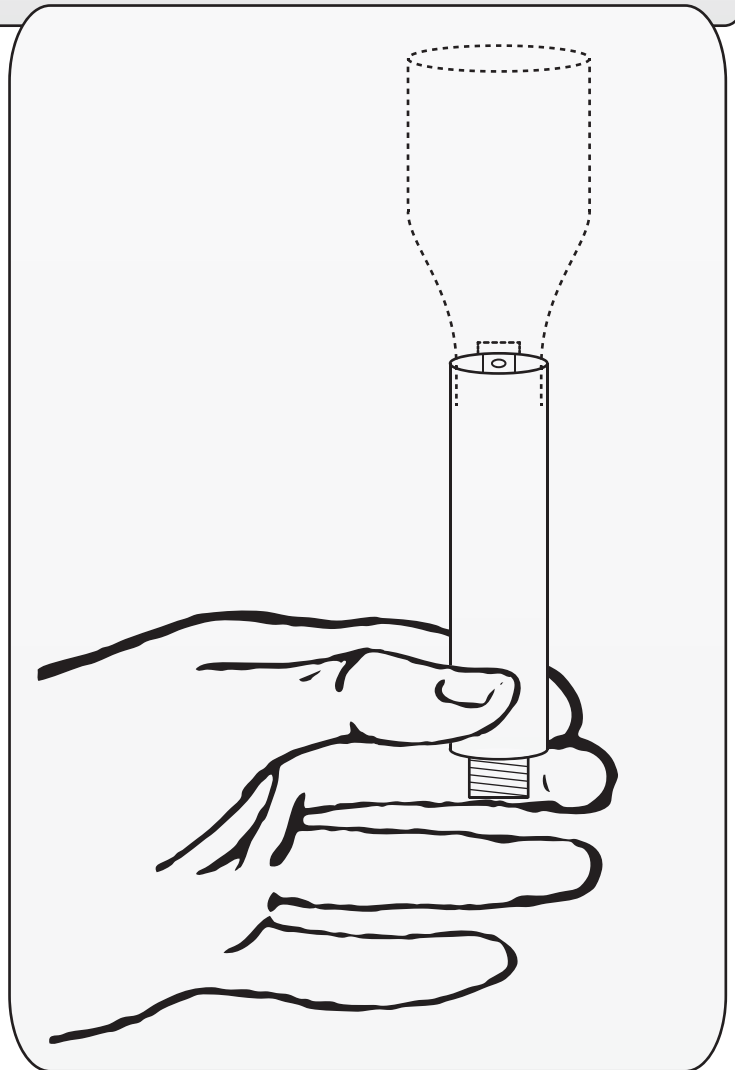
CARTRIDGE FILLING INSTRUCTIONS

- Prerequisites:
- Select a level, flat and smooth heat resistant surface to work on i.e. granite kitchen / bathroom counter
 - Jet flame lighter, Heat Shrink Tubing Gun or 1500+ Watt Blow Dryer recommended, regular lighter will also work
 - Cartridge Fill Tool

- 1.** Hold the cartridge upright, grasping it between your thumb and forefinger just above the threads.



- 2.** Place Fill Tool onto the top of the cartridge. The air tube hole will be covered by the deflector built into the Fill Tool.



* PRO TIP

Attach the cartridge to your Omicron before beginning to heat it while still holding it between your thumb and forefinger just above the threads to be able to still feel the heat.

The Fill Tool has been designed for a very tight precise fit onto the top of the cartridge. Some force might be required the first time a new cartridge gets fitted with the Fill Tool.

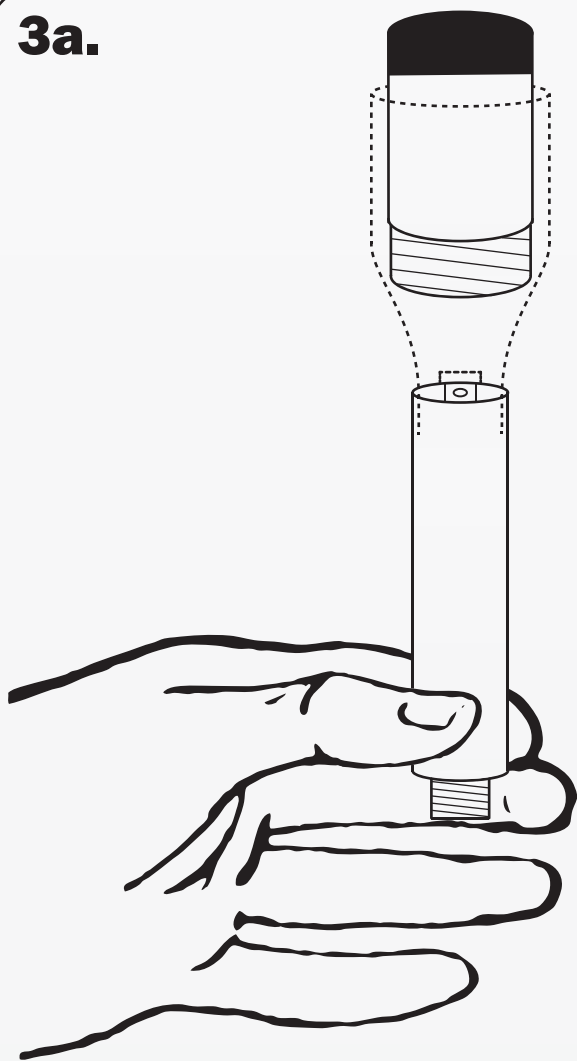


OMICRON V2.5 USER GUIDE

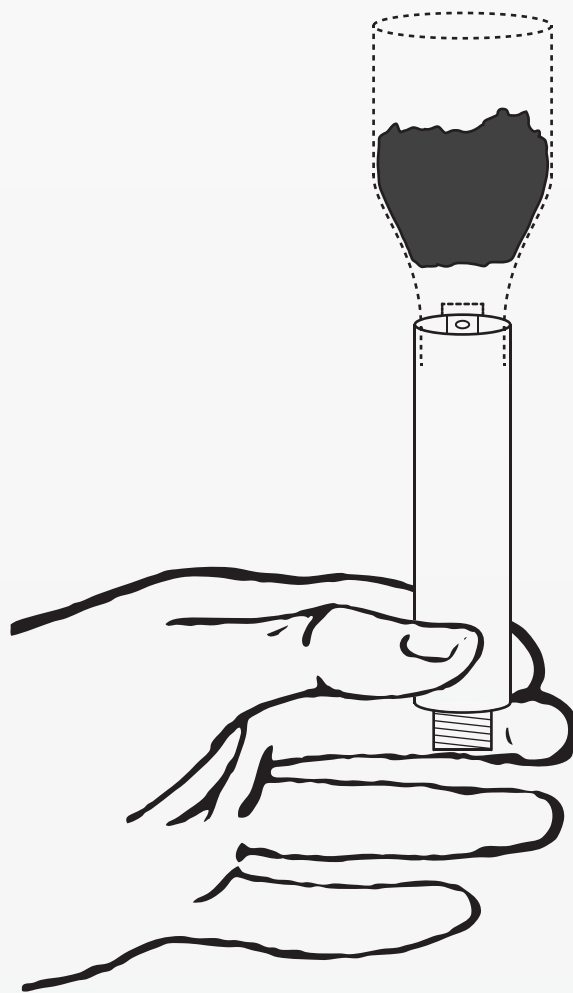
CARTRIDGE FILLING INSTRUCTIONS

- 3.** If your extract is in a vial, place the vial into the Fill Tool upside down and with the vial cap off (3a). If your extract is not in a vial, just load it directly into the Fill Tool (3b). Remember ! 0.5 gram minimum and 1.0 gram maximum.

3a.



3b.





OMICRON V2.5 USER GUIDE

CARTRIDGE FILLING INSTRUCTIONS

The goal during cartridge filling is to get all your extract into the bottom of the cartridge using **as little heat as possible**, but as much as needed. We want to avoid any cold spots on the cartridge walls to help prevent any melted extract from solidifying on the way down and causing an air gap or blockage of any kind.

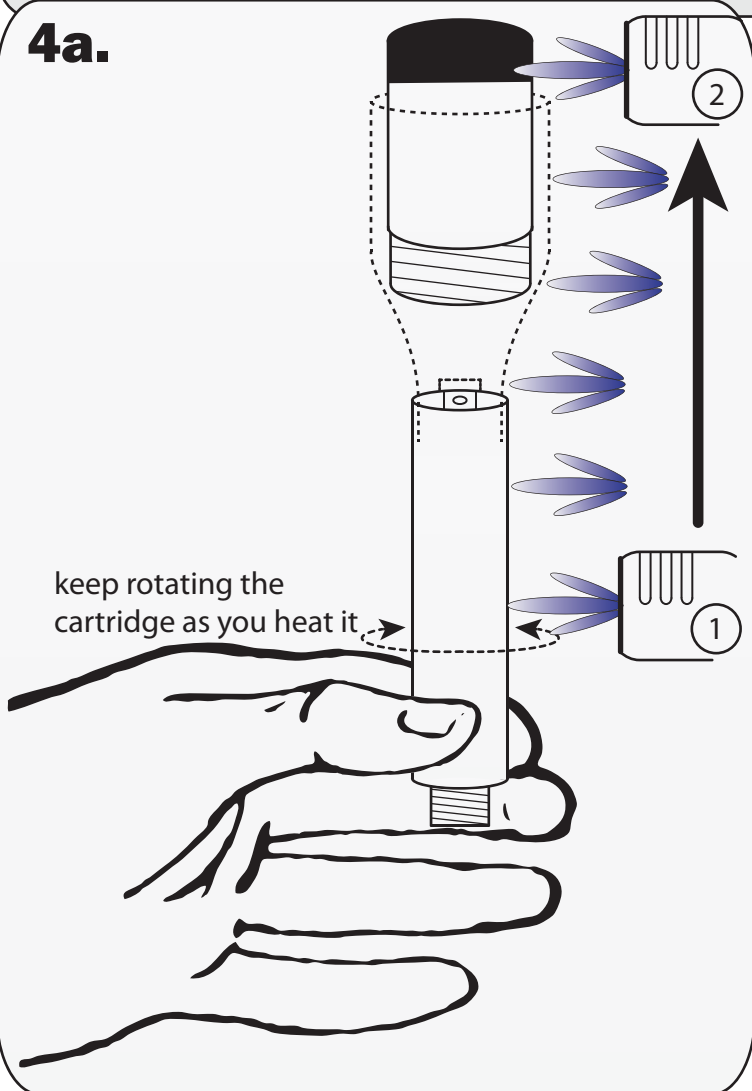
*** PRO TIP**

For Optimal Performance Please Use No More Than 0.6 Grams of Oil Per Filling

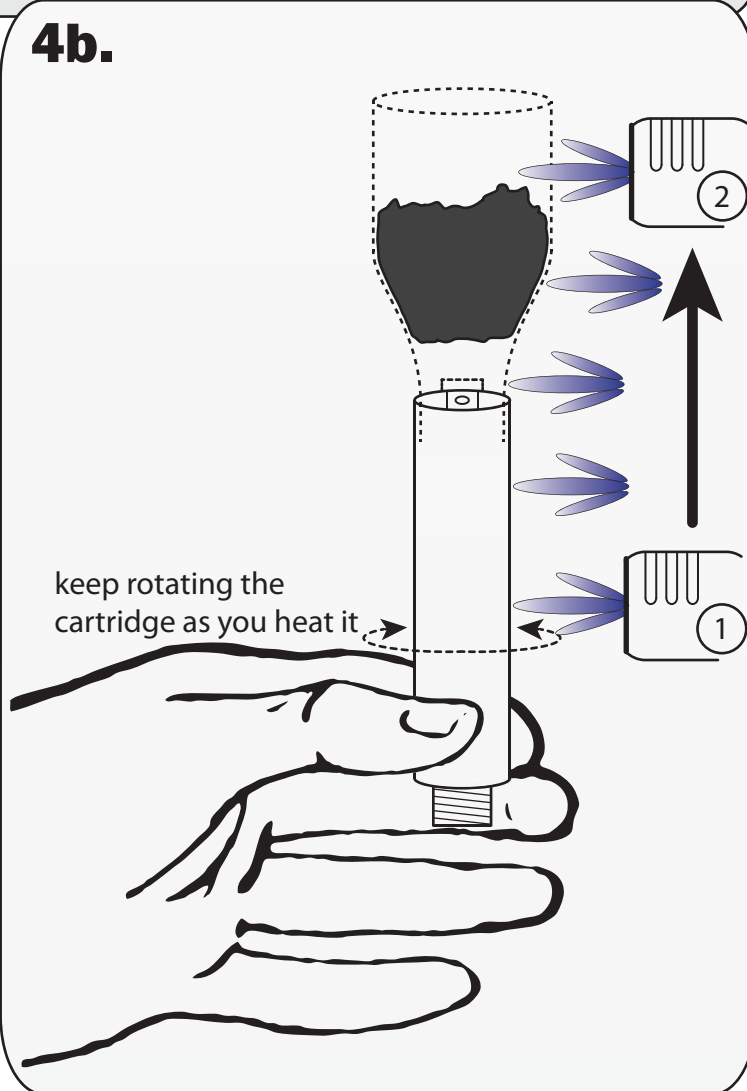
- 4.** Gently start to apply heat with your torch lighter on a low setting. Preheat the center of the cartridge first, just above your fingers **①** until you feel the cartridge body get warm. Keep rotating the cartridge so it heats all around evenly. Once you feel heat working down, move the flame slowly up the cartridge toward the top **②** being careful to not overheat your extract as this will cause your extract to taste poor. If your fingers get too hot, stop, let it cool, and repeat again if necessary. If the cartridge gets too hot to hold, you are applying too much heat.

DO NOT overheat the cartridge or your extract!

4a.



4b.





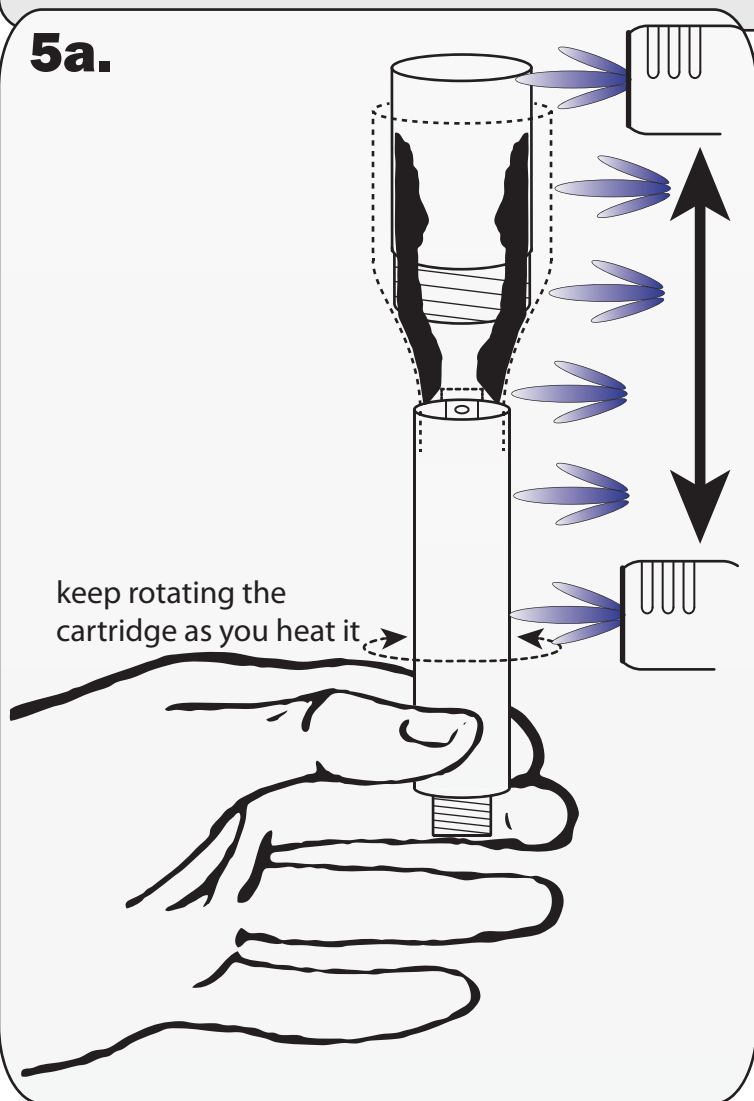
OMICRON V2.5 USER GUIDE

CARTRIDGE FILLING INSTRUCTIONS

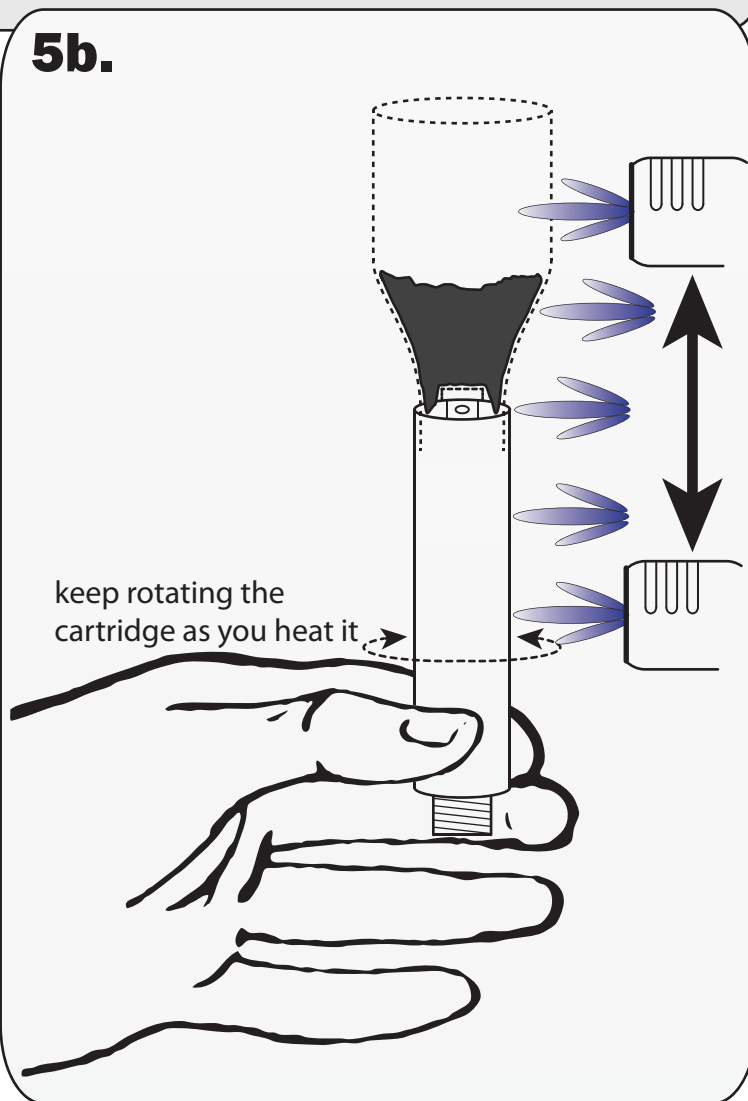
- 5.** Keep applying heat with your torch lighter on a low setting, moving the flame up and down from the top of the vial 5a or Fill Tool 5b down to just above your fingers. Keep rotating the cartridge so it heats all around evenly. You should see your extract start to liquefy and run down the Fill Tool and into the cartridge.

DO NOT overheat the cartridge or your extract!

5a.



5b.





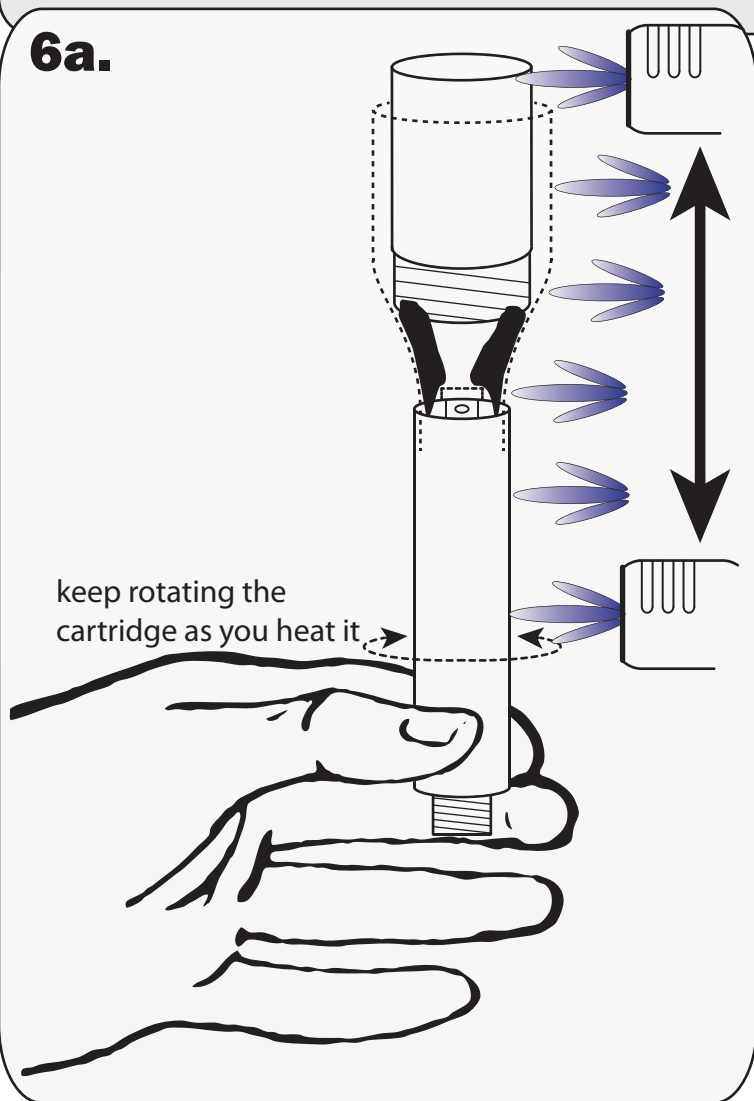
OMICRON v2.5 USER GUIDE

CARTRIDGE FILLING INSTRUCTIONS

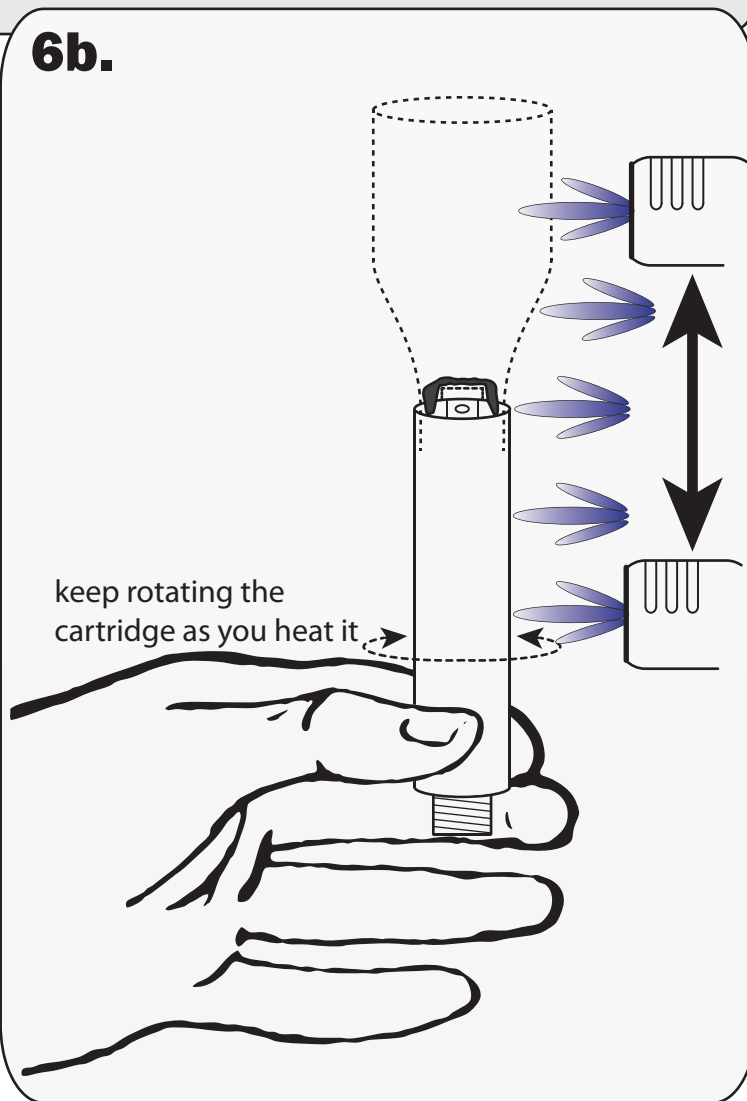
- 6.** Once the extract begins to flow into the cartridge, move your torch lighter back down to heat the Fill Tool and cartridge until all of your extract is in the cartridge. After about 15 - 20 seconds of heating, the extract should be well on its way to the bottom of the cartridge, stop heating. Attach the cartridge to your Omicron v2.5 and let the Fill Tool, vial and cartridge cool down for 5 minutes before touching them!!!

DO NOT overheat the cartridge or your extract!

6a.



6b.





OMICRON V2.5 USER GUIDE

CARTRIDGE FILLING INSTRUCTIONS

- 7.** Once cool, remove the vial (7a) and then the Fill Tool (7b).
The cartridge is now ready for use.

7a.

!!! Let the Fill Tool, vial
and cartridge cool down
before touching them !!!



7b.

